



PERFORMANCE MATCHED IMPLEMENTS

FOR KUBOTA BX AND B SERIES



For Earth, For Life
Kubota

					BX SERIES				B SERIES			
MATCHING CHART FOR BX AND B SERIES					BX1880V - AU	BX2380 V - AU	BX2680V - AU	BX23SLB - AU	B2301 HSD	B2601 HSD	B3150 HSD-HSDC	B3150 SUHSD
IMPLEMENT TYPE	IMPLEMENT MODEL	MOUNTING TYPE	WEIGHT (kg)	WORKING WIDTH (cm)								
Box Blades	BB0548	"3-Point: Cat. 0,1"	125	122	●	●	●	●	●			
	BB1260	"3-Point: Cat. 1"	157	152	●	●	●	●	●	●	●	●
Disc Harrows	DH1048	"3-Point: Cat. 1"	191	122	●	●	●	●	●	●	●	●
	DH1060	"3-Point: Cat. 1"	249	152		●	●	●			●	●
Food Plot Seeders	FPS48**	Pull-Type	168	137	●	●	●	●	●	●	●	●
Grading Scrapers	GS0548	"3-Point: Cat. 1"	141	122	●	●	●	●				
	GS0560	"3-Point: Cat. 1"	159	152	●	●	●	●	●	●	●	●
Mouldboard Plows	MP10	"3-Point: Cat. 1"	133	35		●	●	●	●	●	●	●
Post Hole Diggers	PD10**	"3-Point: Cat. 1"	54	N/A	●	●	●	●	●	●		
	PD25**	"3-Point: Cat. 1,2"	84	N/A						●	●	●
Quick Hitches	QH05	"3-Point: Cat. 1"	17	N/A	●	●	●	●				
	QH10	"3-Point: Cat. 1"	31	N/A		●	●	●	●	●	●	●
	QH15	"3-Point: Cat. 1"	32	N/A					●	●	●	●
Rear Blades	RB0548	"3-Point: Cat. 1"	58	122	●	●	●	●	●			
	RB1560	"3-Point: Cat. 1"	112	152	●	●	●	●	●	●	●	●
	RB1672	"3-Point: Cat. 1"	135	183					●	●	●	●
	RB2684	"3-Point: Cat. 1"	180	213							●	●
Rotary Cutters (Single Spindle)	RCR1242	"3-Point: Cat. 1"	174	106		●	●	●	●	●	●	●
	RCR1248	"3-Point: Cat. 1"	181	122		●	●	●	●	●	●	●
	RCR1548	"3-Point: Cat. 1"	192	115						●	●	●
Seed Bed Rollers	SBR72 (3PT)	"3-Point: Cat. 1"	200	175		●	●	●			●	●
	SBR72 (P-T)	Pull-Type	217	175	●	●	●	●	●	●	●	●

Check with the tractor manual to verify for proper ballasting when using an implement or attachment on the machine. Additional kits (Rear Remotes, Third Function valves, etc.) may be required in order to use any of the above implements. Check with your local dealer to determine what is needed for proper fitment and operation.

Our Land Pride implements identified in the chart on page 2 have received an Engineering Release approving use by Kubota. They meet the performance matching requirements for the specified machines for normal operating conditions.

The specifications are intended for general application; unusual soil, terrain, or severe operating conditions may not allow for the use of a specific implement.

The use of implements which do not meet the approved specifications may result in malfunctions or damage to the machine, damage to other property and/or injury to the operator or to others.

The machine, implement, and operating conditions need to be evaluated and monitored by the operator to be sure they are within safe operating conditions for general use.



** This implement/attachment is approved for the base weight, but allows for additional ballasting (concrete blocks, seed, water tanks). Verify with the tractor.

GRADING SCRAPERS



GS05 SERIES: 17-33 HP

Fits B Series | Fits BX Series

Heat-Treated Shanks & Cutting Edges
60" (1524mm) Working Width
Replaceable Skid Shoes

GS15 SERIES: 20-50 HP

Fits B Series

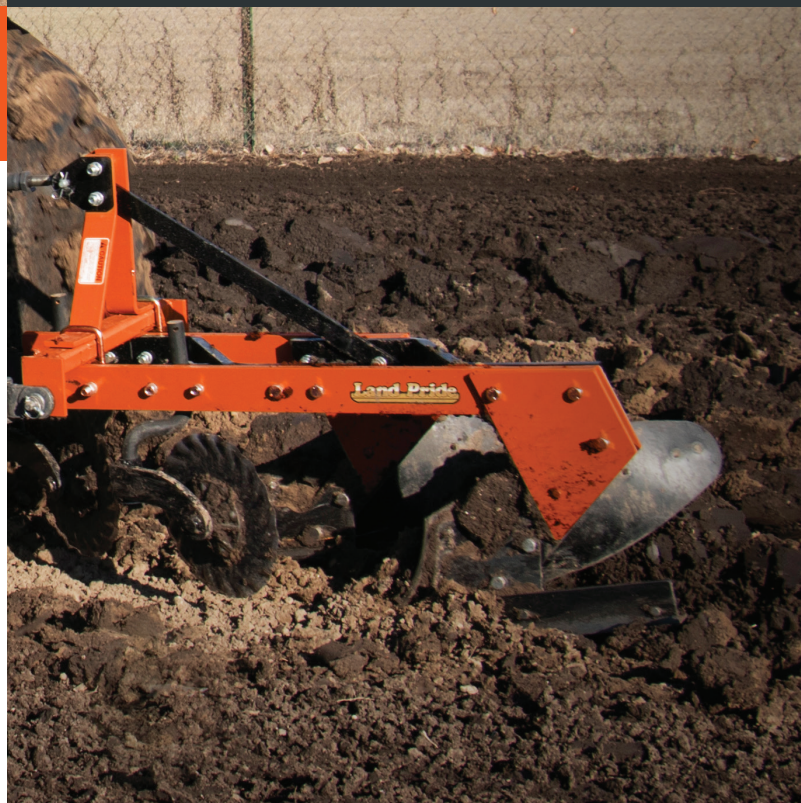
Heat-Treated Shanks
72" (1829mm) Working Width
1/2" x 6" Cutting Edges, Reversible & Replaceable
Replaceable Skid Shoes
Optional Rear Facing Blade

MOULDBOARD PLOWS

MP10: 20-60 HP

Fits B Series

Cat 1 3-Point Hitch
14" Share
Max Working Depth of 7"
Optional Coulter(s)



QH05 SERIES: UP TO 28 HP

Fits B Series | Fits BX Series

700 lb. (317 kg) Lifting Capacity
Automatic Lock on Lower 3-Point Arms
Floating Top Link

QH10 SERIES: CAT. 1

Fits B Series | Fits BX Series

2,000 lb. (902kg) Lifting Capacity
Non-standard Lower Lugs (no bushings required)

QH15 SERIES: UP TO 28 HP

Fits B Series

2,000 lb. (902kg) Lifting Capacity
Automatic Lock on Lower 3-Point Arms
Unlock from Tractor Seat with Convenient Handles
Floating Top Link

QUICK HITCH



FOOD PLOT SEEDER

FPS48 SERIES: MIN 17 HP

Fits B Series | Fits BX Series

Combination 2" Ball/Clevis Hitch
48" Working Width
12V Spin Spreader
55 litres Volume
16" Notched Disc Blades
Rear Packer Roller
104" Total Length





REAR BLADES

RB05 SERIES: 17-25 HP

Fits B Series | Fits BX Series

Angle and Offset
13-1/2" Mouldboard
48" (1219mm) Working Width

RB15 SERIES: 17-40 HP

Fits B Series | Fits BX Series

Angle and Offset Capabilities
60" (1524mm) Working Width
14" Mouldboard and Replaceable Cutting Edge

RB16 SERIES: 17-40 HP

Fits B Series | Fits BX Series

Tilt, Angle, and Offset Capabilities
Optional Hydraulic Angling
72" (1829mm) Working Width
14" Mouldboard and Replaceable Cutting Edge

RB26 SERIES: 25-60 HP

Fits B Series

Tilt, Angle, and Offset Capabilities
84" (2134mm) Working Width
17-1/2" Mouldboard and Replaceable Cutting Edge



BOX SCRAPERS

BB05 SERIES: 17-25 HP

Fits B Series | Fits BX Series

4 Heat-Treated Shanks
48" (1524) Working Width
4" x 4" Square Tube

BB12 SERIES: 17-30 HP

Fits B Series | Fits BX Series

2-1/2" x 15" Shanks
60" (1524mm) Working Width
15" Mouldboard
Reversible & Replaceable Cutting Edge



ROTARY CUTTERS

RCR12 SERIES: 20-60 HP

Fits B Series | Fits BX Series

Front and Rear Guards

42" (1067mm) & 48" (1219mm) Working Widths

32mm - 254mm Cutting Height

RCR15 SERIES: 20-60 HP

Fits B Series

45.5" (1156mm) Working Width

44mm - 290mm Cutting Height

2" (50mm) Diameter Cutting Capacity



POST HOLE DIGGERS



PD10 SERIES: 15-30 HP

Fits B Series | Fits BX Series

6", 9", and 12" Augers
30 HP Gearbox
2" (50mm) Output Shaft

PD25 SERIES: 25-55 HP

Fits B Series

6" - 24" Augers
2" Output Shaft
Cat. 3 Driveline with Shear-pin
or Radial-pin Protection



SEED BED ROLLER

SBR SERIES: 18-52 HP

Fits B Series | Fits BX Series

72" Working Width
11" Roller Diameter
Optional Tongue, 2" Ball Hitch
Transport Tires on Pull-Type

DH10 SERIES: UP TO 40 HP MAX

Fits B Series | Fits BX Series

Notched or Smooth Discs
48" (1219mm) & 60" (1524mm) Working Widths
2" Square Tube Frame
7-1/2" Blade Spacing
Gangs Angle up to 21 degrees

DISC HARROWS



Kubota Australia Pty Ltd

25-29 Permas Way, Truganina, Victoria 3029
1300 582 582 | sales@kubota.com.au

kubota.com.au

CB Norwood Distributors Ltd

P.O. Box 1265, 888 Tremaine Avenue,
Palmerston North 0800 KUBOTA
Tel: 06 356 4920 Fax: 06 356 4939

Kubota Corporation notes that specifications and technical information are subject to changes without notice and Kubota does not represent or warrant that the information in this publication is completely accurate or current; however, Kubota used reasonable efforts to set forth and include accurate and up to date information in this publication. Kubota disclaims all representations and warranties, whether express or implied, including, but not limited to, warranties of merchantability and fitness for a particular purpose and Kubota shall not be liable for any damages, whether compensatory, direct, indirect, incidental, special, or consequential, arising out of or in connection with the use of this publication, or in the information therein.

